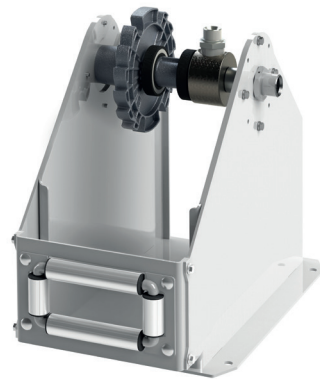


HOSE REELS: 508 SERIES

100' Max hose capacity



Hose reel in floor/tank position



508 Series HD Large Capacity Hose Reels

Full metal, heavy-duty, double pedestal hose reels, with hose capacity up to 100' x 1/2" hose.

Very tough full metal construction

Large capacity reels, able to withstand regular use and abuse in intensive duty applications

Fatigue resistant steel spring

For years of durable performance and even load when pulling and recoiling

Spool mounted on two permanently lubricated and sealed ball bearings

To reduce torque load on spring for smooth retraction and longer life

Large latching area for easier operation

Dual Spring on larger hose capacity models

75' and 100' hose capacity reels with a dual spring for effective and consistent hose retraction

Hose reels offer three mounting positions:

Can be placed in floor, ceiling and tank positions

Hose reels are delivered in ceiling mount position

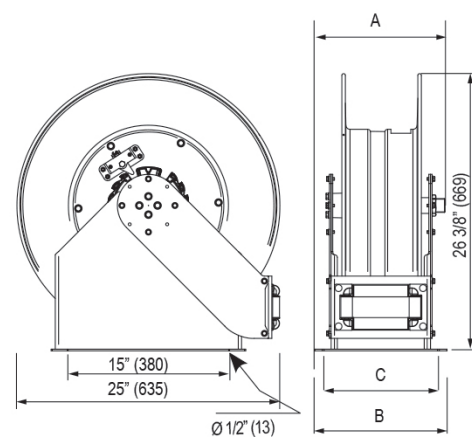
Hose reels with hose include hose stop

MARKETS SERVED

- Fleets
- Lube trucks
- General manufacturing
- Mining and construction
- Railroad and mass transit

FLUIDS HANDLED

- Air
- Water
- Antifreeze solutions
- Synthetic and mineral oils
- Used oil evacuation
- Diesel



	508 002 Single Spring	508 046 Double Spring
A	12 3/8" 315)	13 3/4" (349)
B	11 3/8" (290)	12 5/16" (320)
C	12 5/16" (320)	13 15/16" 353)



HOSE REELS: 508 SERIES
100' Max hose capacity

TECHNICAL SPECIFICATIONS

Operating Temperature Range	
Air / Water / Antifreeze / Oil	-22°F / 194°F - (-30°C / 90°C)
Wetted Parts	
Air / Water / Antifreeze / Oil	Steel / electroless nickel plated steel / Nitrile rubber
Weight <i>without hose</i>	92.5 lb (43 Kg)
Manual	850 837

ORDER INFORMATION

Part No.	Hose Length	Hose I.D.	Outlet thread	Max. Working Pressure	Net weight	Reel only with swivel Part No.	Springs	Delivery Hose	Inlet Hose
LOW PRESSURE AIR/WATER antifreeze and windshield wash solution brass shaft and acetal swivel - inlet 1" NPT(F)									
508 125	50'	1"	1" NPT(M)	300 psi	110.2 lb	508 002	Single	863 452	863 001
508 152	100'	1/2"	1/2" NPT(M)	300 psi	121.2 lb	508 046	Double	829 100	863 001
LOW PRESSURE DIESEL steel shaft and swivel - inlet 1" NPT(F)									
508 425	50'	1"	1" NPT(M)	300 psi	115.7 lb	508 002	Single	863 450	863 002
MEDIUM PRESSURE OILS steel shaft and swivel - inlet 1" NPT(F)									
508 225*	50'	1"	1" NPT(M)	1,250 psi	123.4 lb	508 002	Single	863 451	863 003
508 244	75'	3/4"	3/4" NPT(M)	1,250 psi	125.6 lb	508 046	Double	857 475	863 003
508 252	100'	1/2"	1/2" NPT(M)	2,000 psi	121.5 lb	508 046	Double	854 100	863 003

*Hose reel 508 225 can also be used for used oil evacuation

Hose reels do not include inlet hose. Order separately.

Recommended Accessories for use with 508 series reels



528 002	Bi-conical hose stop and U-bolt kit fits 1/2" hose
528 003	Bi-conical hose stop and U-bolt kit fits 3/4" hose
528 001	Bi-conical hose stop and U-bolt kit fits 1" hose